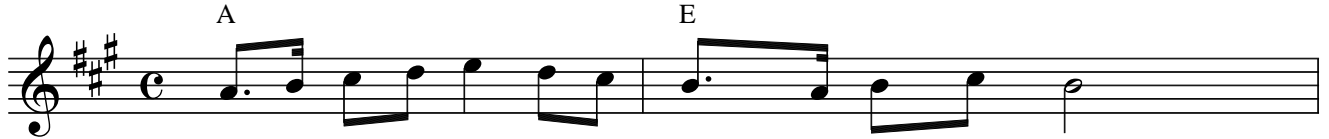
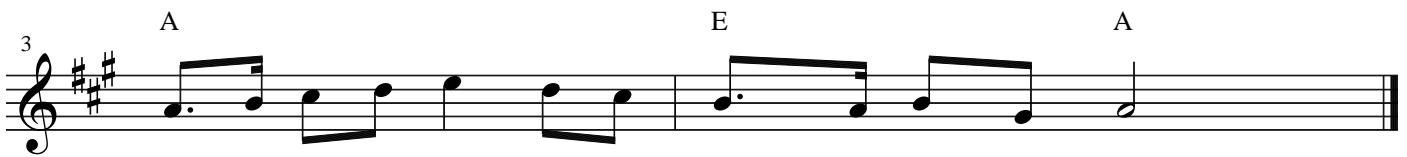


Maypole Song

by Nancy Stewart
copyright 2013
Friends Street Music, BMI



1. Walk a - round the May - pole to wel - come in the spring
2. Walk in - to the mid - dle and walk back out a - gain



Walk a - round the May - pole, to - geth - er, we will sing.
Walk in - to the mid - dle and walk back out a - gain.

*Note: Use of Am chord is optional, you can just skip it if you want..On the recorded version I play the song in the key of A. So if you want to sing and play along using the chords in this sheet music, just put your capo on the 2nd fret and it will sound the same.